



37th National Indian Timber Symposium



"Overcoming Obstacles in Pursuit of Sustainability"



June 10-13, 2013



Keshena, WI



Intertribal Timber Council

Invasive Earthworms Cause Dramatic Changes in Hardwood Forests



Brennan Waupoose
Biological & Physical Sciences
College of Menominee Nation

Invasive Species Research Intern
Summer 2012

ITC Symposium June 2013

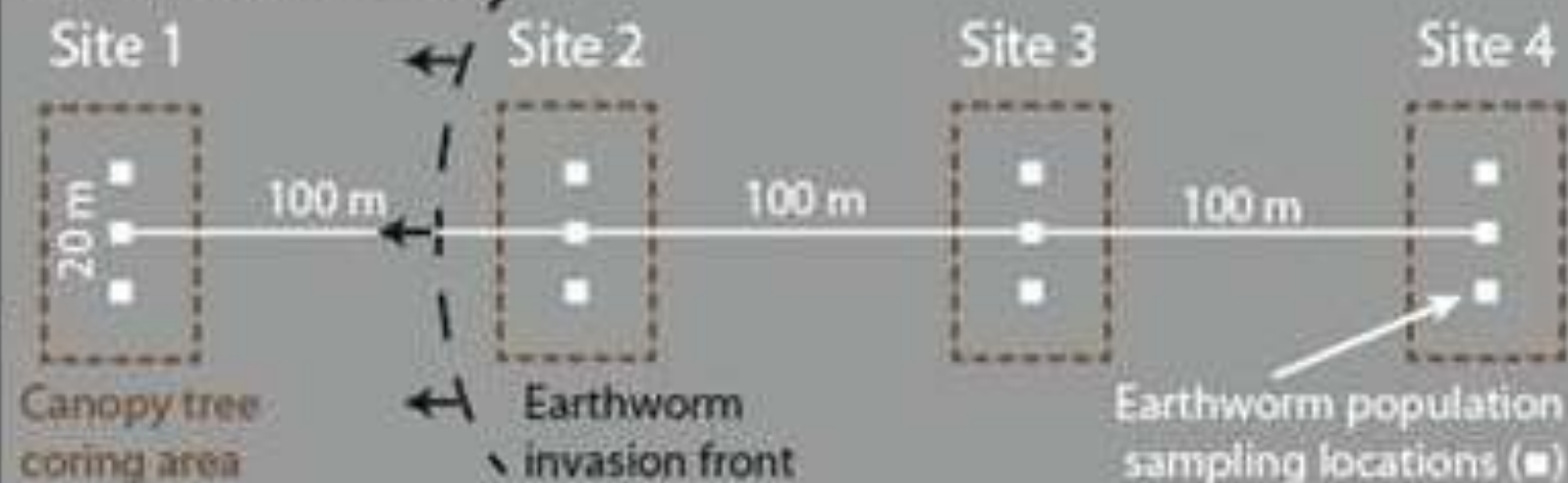
Project Overview

- College of Menominee Nation and University of Wisconsin-Platteville
- Funded by Wisconsin Alliance for Minority Participation (WiscAMP) Small Grants Program
- Data collected will be used to propose a large scale assessment of Great Lakes region.

Study Area



Transect layout





Site 1



Site 2



Site 3



Site 4

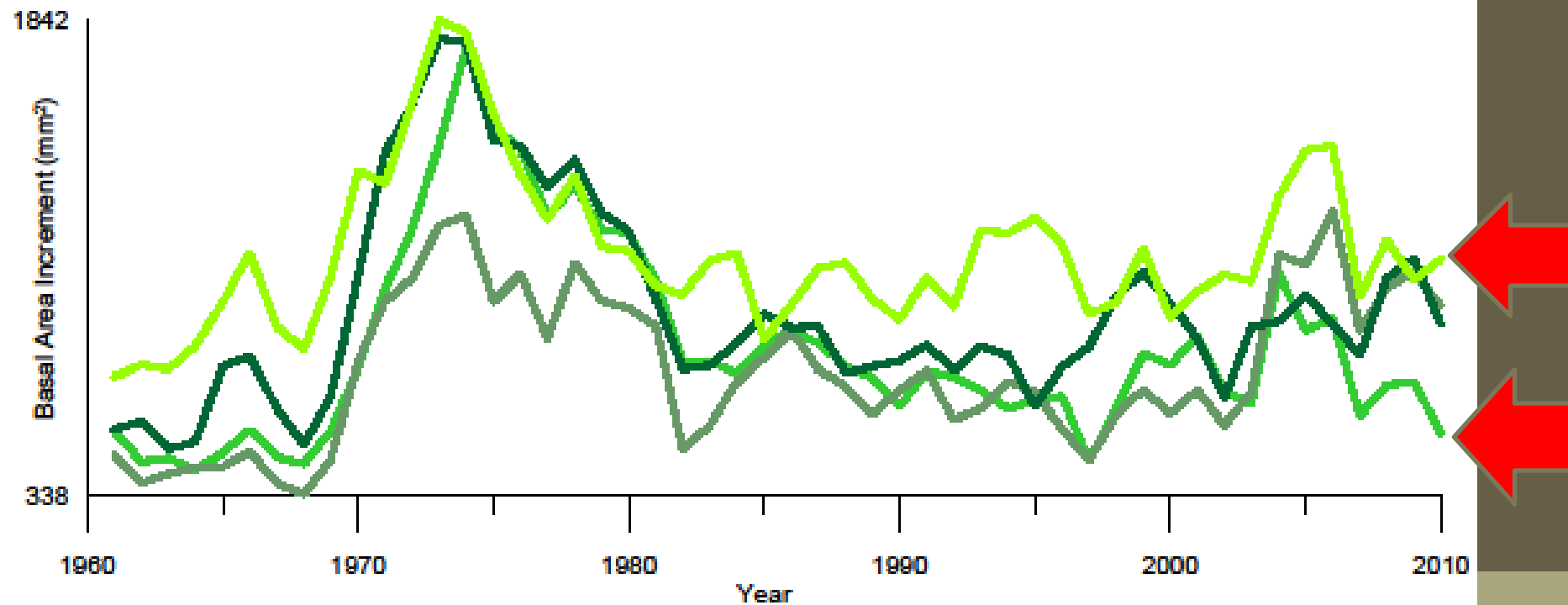


PINE REGENERATION???

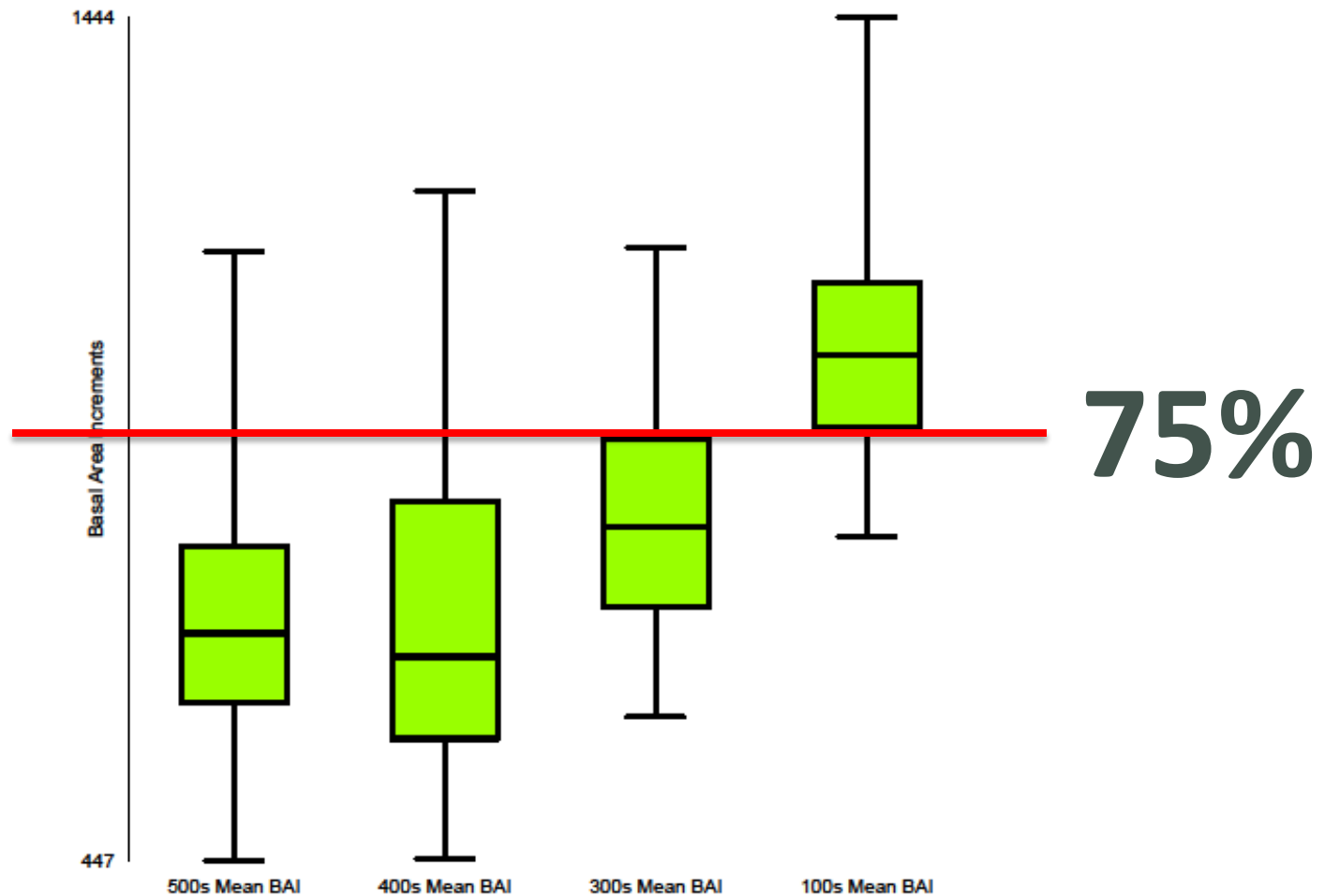




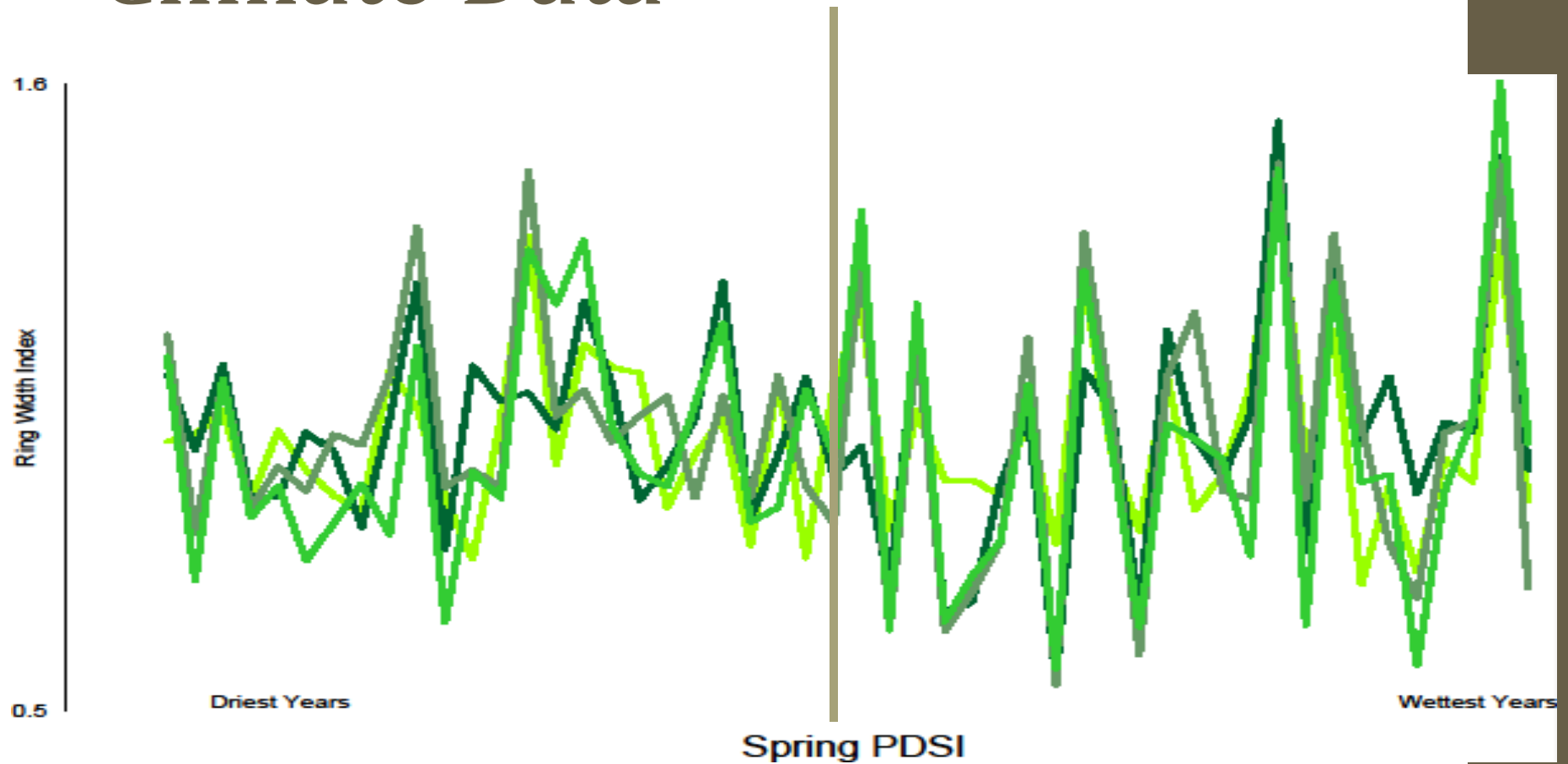
Basal Area (mm²)



Basal Area 1980-2011



Climate Data



Conclusion



- **Earthworms drastically alter the appearance, productivity, and sensitivity to drought of hardwood maple forests.**

Cultural Impacts?

- Sugar Camps
- Timber Harvesting
 - Millworks
 - Traditional Crafts
- Medicinal Plants
- Animals

Thank You!





Symposium Videos Produced by

