

Building Consensus

Working together
to manage invasive plants in
Southwestern British Columbia

Dawn Hanna and Lesley Douglas,
Greater Vancouver Invasive Plant Council

Greater Vancouver Invasive Plant Council

- Who we are
- What we do
- Where we work
- Why
- How

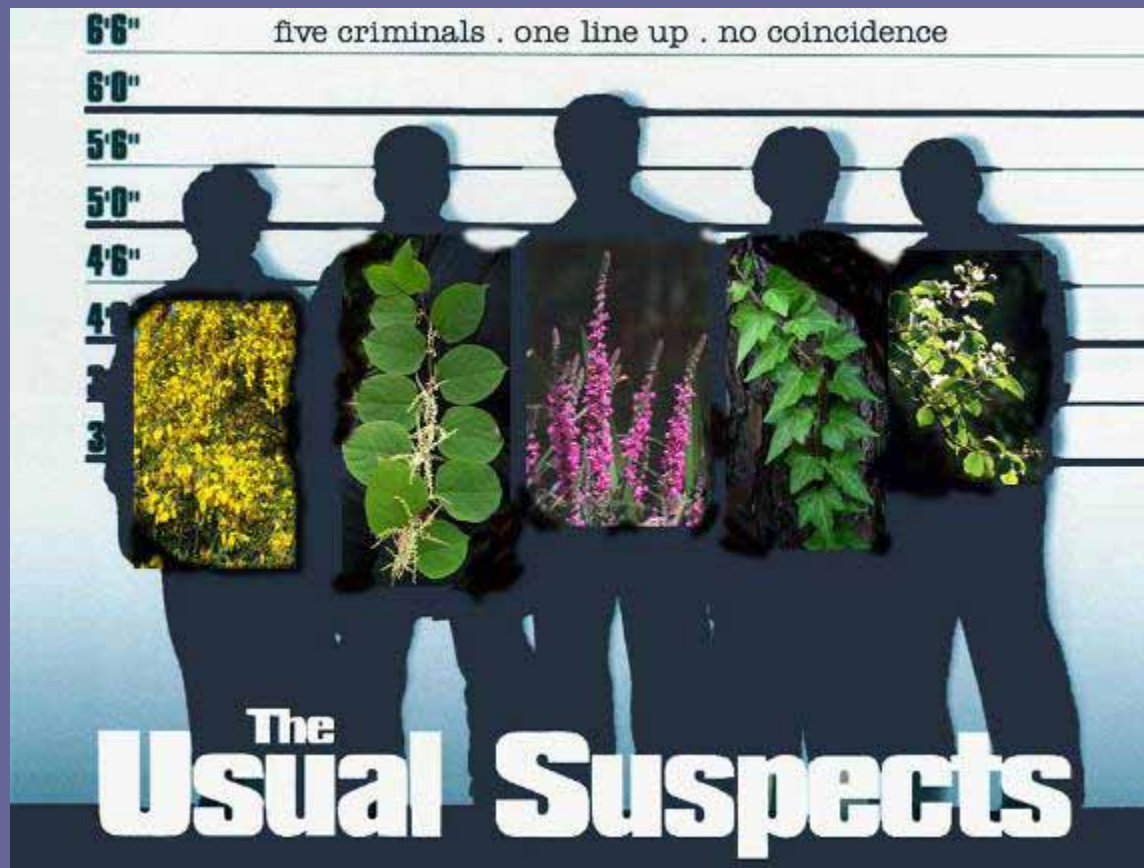


Greater Vancouver



- Home to 2.2 million people.
- Encompasses 21 municipalities, 1 electoral district
- Covers an area of 2,844 km² (1,100 mi²)
- Huge geographic variety; numerous land uses

Invasive plants in the region



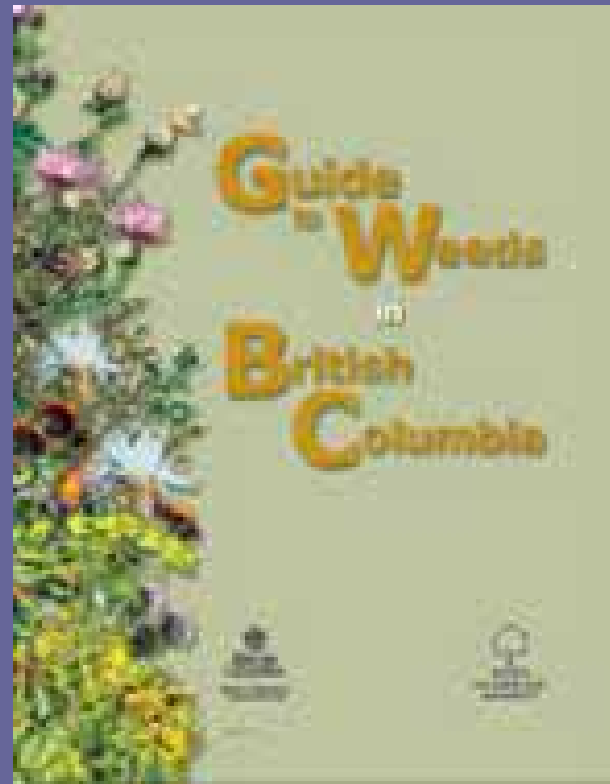




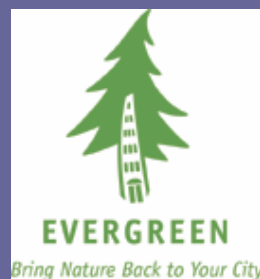
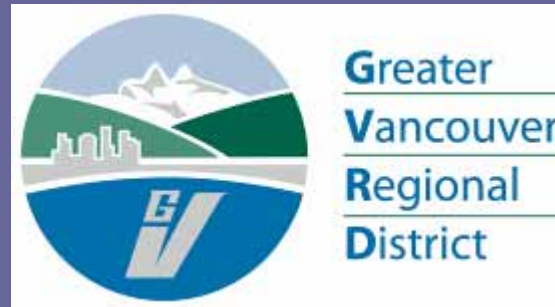


Legislative tools

- BC Weed Control Act
- Agricultural focus
- Of 12 highest priority species designated in Greater Vancouver, not one appears on provincial noxious weed list

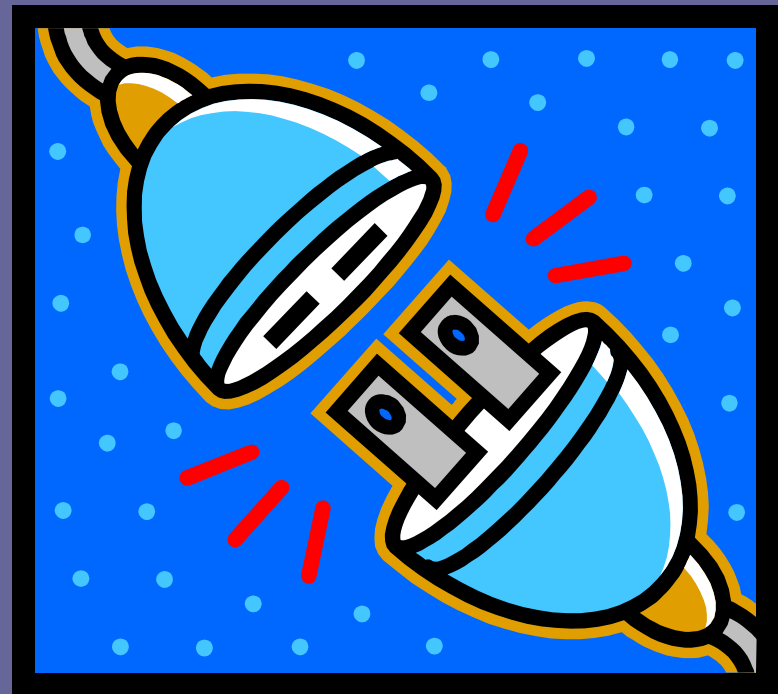


A spectrum of players



Informal beginnings

- There were some connections between some groups, but realized a need for something more formal to make sure we were working together



Inconsistencies



- To use a book analogy, some groups were just barely into the preface, others were tearing through chapter after chapter. Still others, had yet to crack the spine.

Greater Vancouver Invasive Plant Council

- Municipal and regional governments
- Stewardship groups
- Other non-profit organizations
- First Nations
- Academic institutions
- Nurseries
- Other (provincial government ministries, utility corporations)

Principles

- To facilitate efforts
- To complement existing initiatives
- To avoid duplication of efforts
- To provide science-based information
- To deal with the financial realities and limitations of agencies and organizations
- To get everyone on the same page

Purposes

- To work with stakeholders on invasive plant management projects and initiatives,
- To increase awareness of the need to manage invasive plants,
- To encourage the use of science in managing invasive plants,

Purposes, cont.

- To provide information to political decision makers to emphasize the need to manage invasives,
- To collect, compile and disseminate information on managing and controlling invasives,
- To do education and outreach activities
- To collaborate with the Invasive Plant Council of British Columbia

Action plan for the near future

- Bring in representation from all municipalities in the GVRD as well as those in the Squamish-Whistler-Pemberton corridor
- Increase representation in academic, horticultural and First Nations sectors





- Build a user-friendly website with standardized information on invasive plants and invasive plant management

- Develop a regionwide brochure aimed at gardeners to raise awareness and discourage actions that spread invasives





- Hold regional workshops to promote standardized information and approaches and give people an opportunity to ask questions, network and more.

In a nutshell

We want to become the touchstone for invasives in the region – a place where anyone can go to find information and where people can make connections to manage invasive plants in the Greater Vancouver region.

The end

